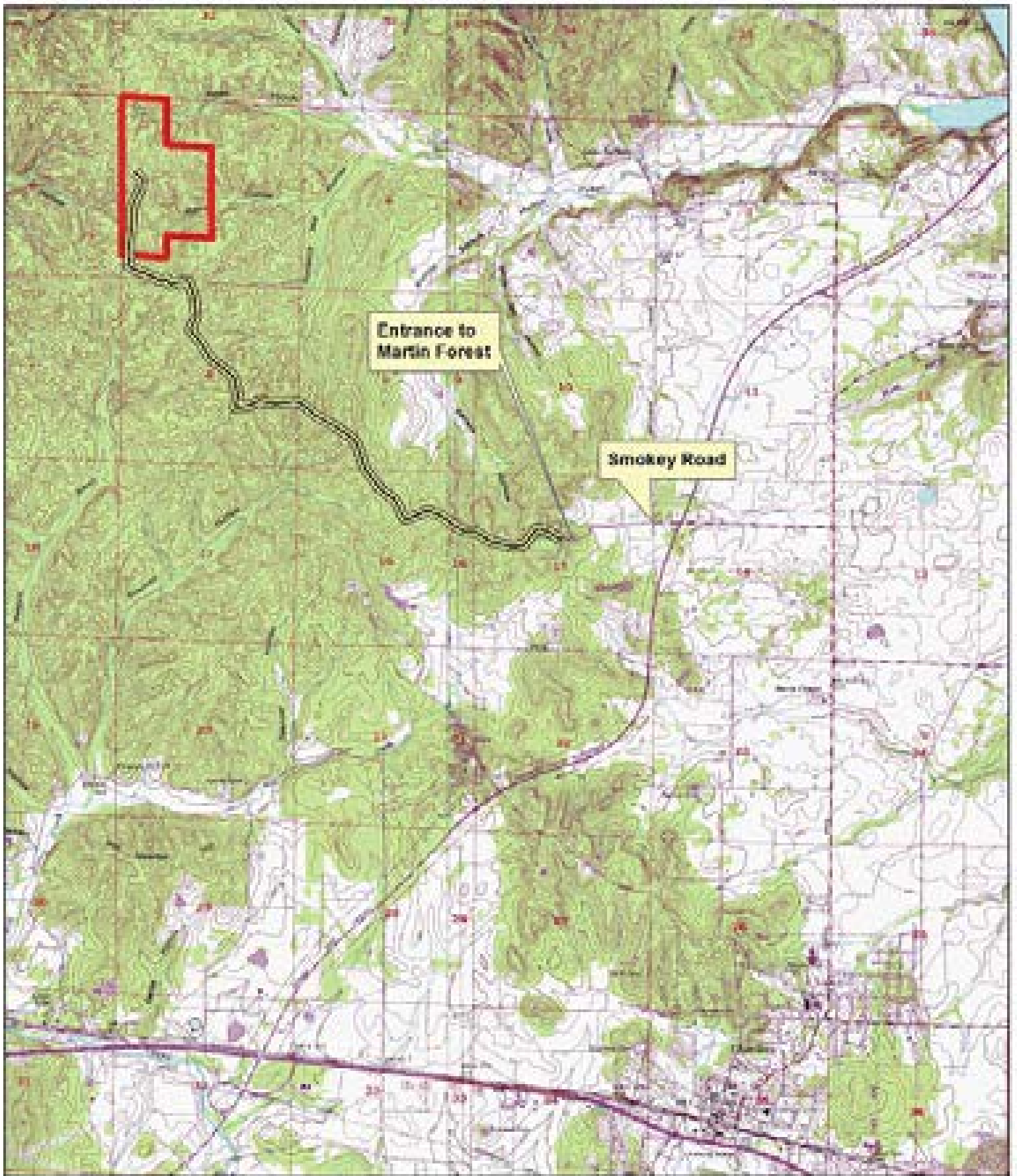




GA, LLC - Cruise Summary Form

Tract #: JAH01	Owner:	Total acres: 220	Timbered acres:	208
----------------	--------	------------------	-----------------	-----

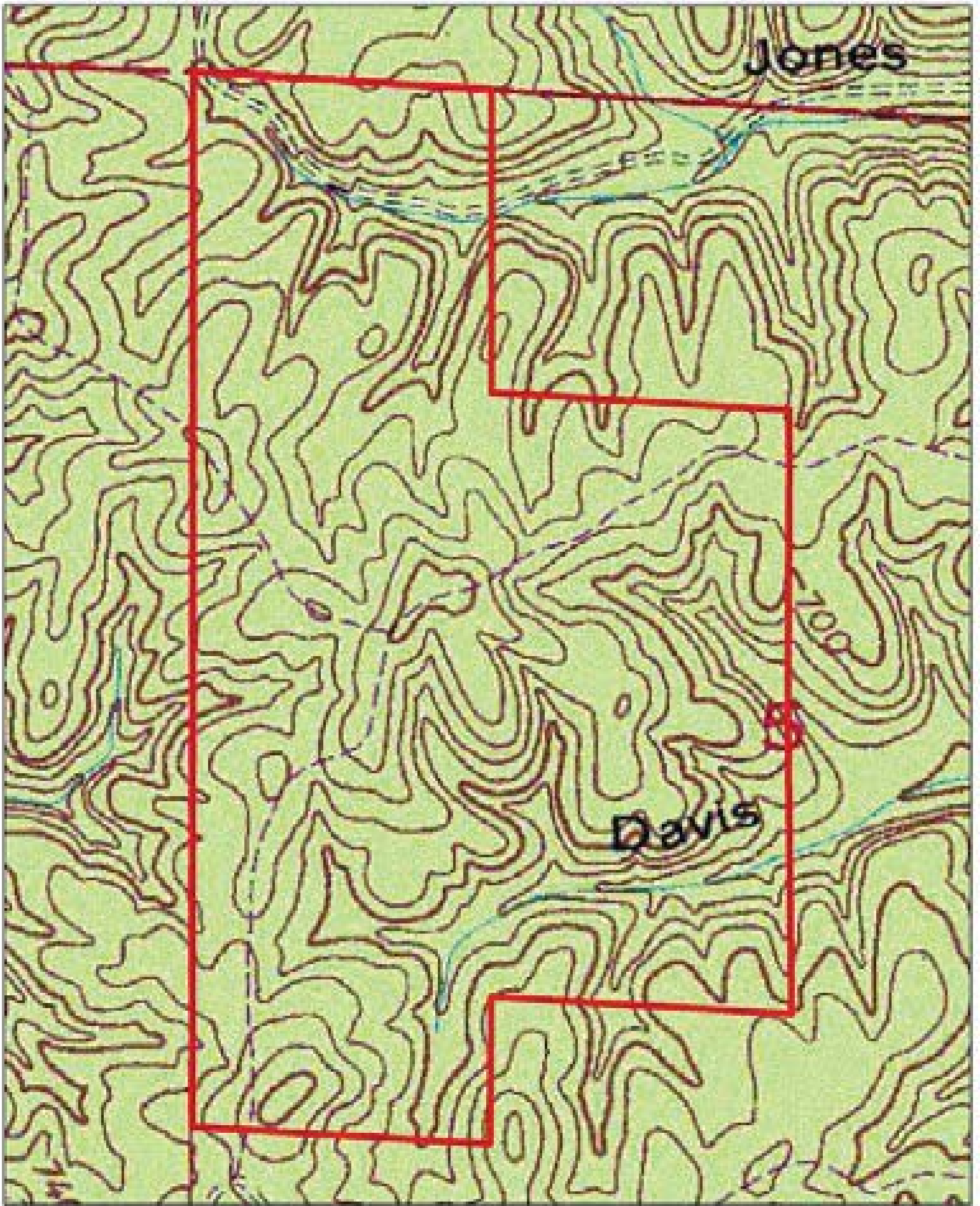
Product	tons/product			tons / acre
Pine PW	5116.8			24.6
Hardwood PW	3120			15.0
1/2 Topwood PW	0			0.0
Pine C-N-S	2288			11.0
Red Oak ST	56.0352			0.3
White Oak ST	53.1648			0.3
Poplar ST	217.6512			1.0
Misc. Hardwood ST	11.7312			0.1
Pine ST	4332.0368			20.8
Totals	15195.4192			



Growing Assets, LLC

JAH01





JAH01



Growing Assets, LLC



