



GROWING  
ASSETS™

## TISHOMINGO COUNTY, MS

Hunting Lease Available

### EJW01\_02

### Airport Tract

Approximately

**77 acres**

*(two parcels)*

- **Hunting:** Bow hunting only
- **Access:** Paved County Road 197
- **Wildlife:** Deer, Turkey, Squirrel, Rabbit, Raccoon, and other game and non-game species.
- **Ground Cover:** mixed timber
- **Lease Payment:** **\$5.50/ac.** Lessee will also be responsible for the cost of hunting lease liability insurance. The 2024 insurance premium is **\$89.82**. Total estimated lease payment for 2024-2025, including insurance, is **\$513.32**.
- **Term:** **3 years**
- **See maps below for more information.**
  
- **Latitude / Longitude: North:** 34.784462 / -88.173099  
**South:** 34.779935 / -88.176720
  
- **Nearest address for GPS purposes:** 1279 US 72, Iuka, MS 38852

#### Questions?

Please contact:

Growing Assets, LLC

Ph: (256) 826-5990

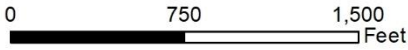
Email: [Cheri@NaturalRG.com](mailto:Cheri@NaturalRG.com)



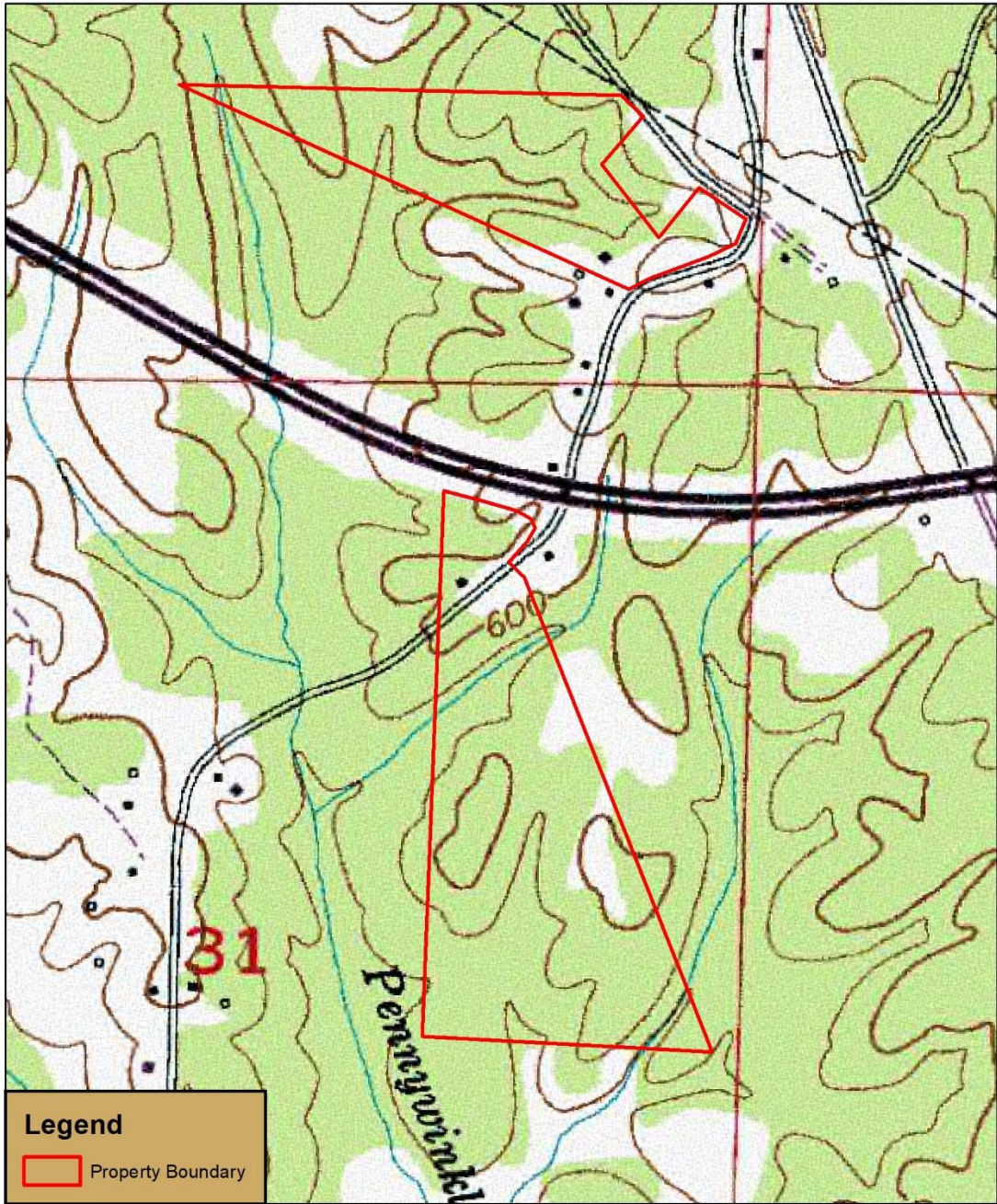
**Legend**  
Property Boundary

**TRACT NUMBER  
EJW01,02**

Growing Assets, LLC



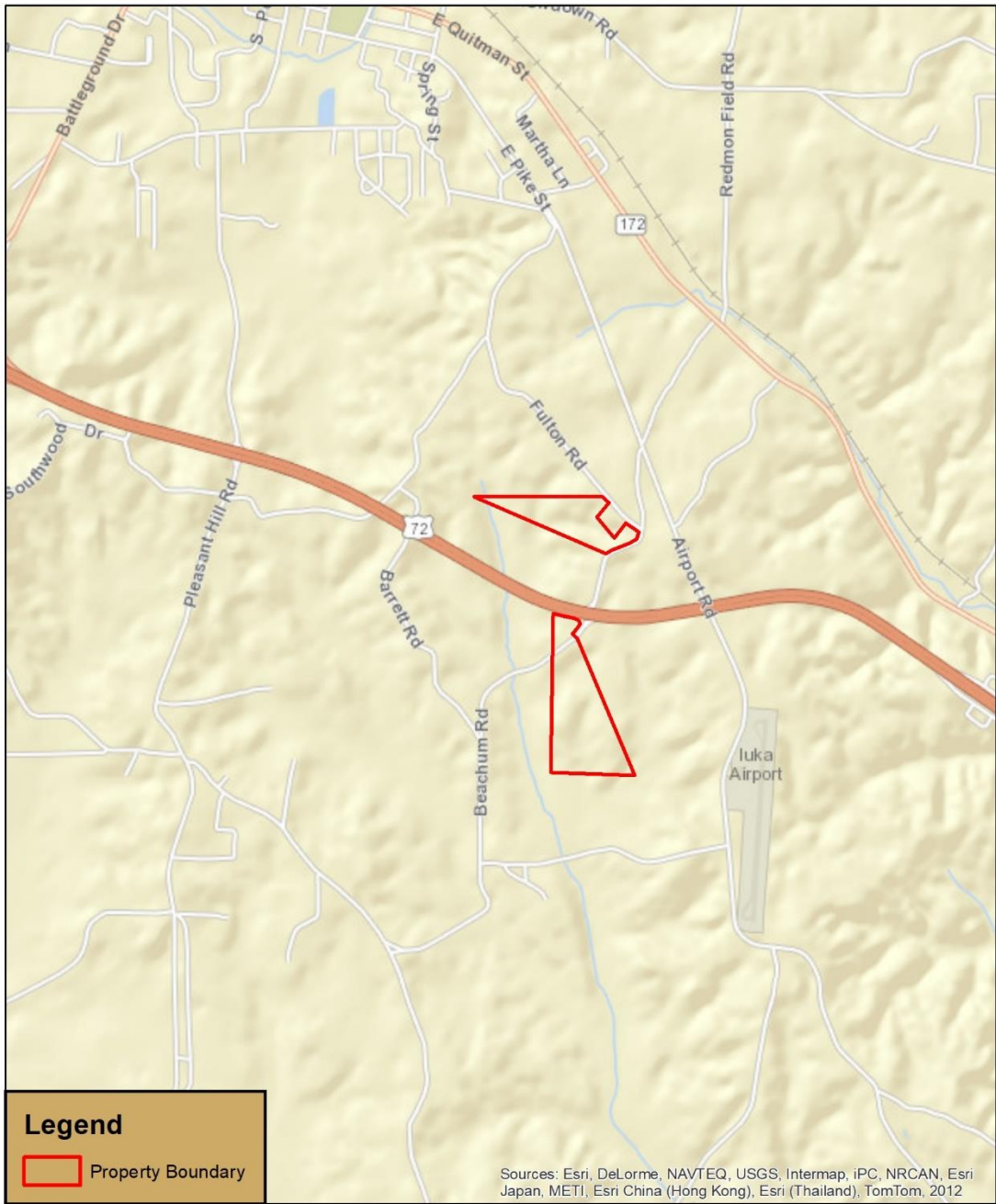




**TRACT NUMBER**  
**EJW01,02**

Growing Assets, LLC



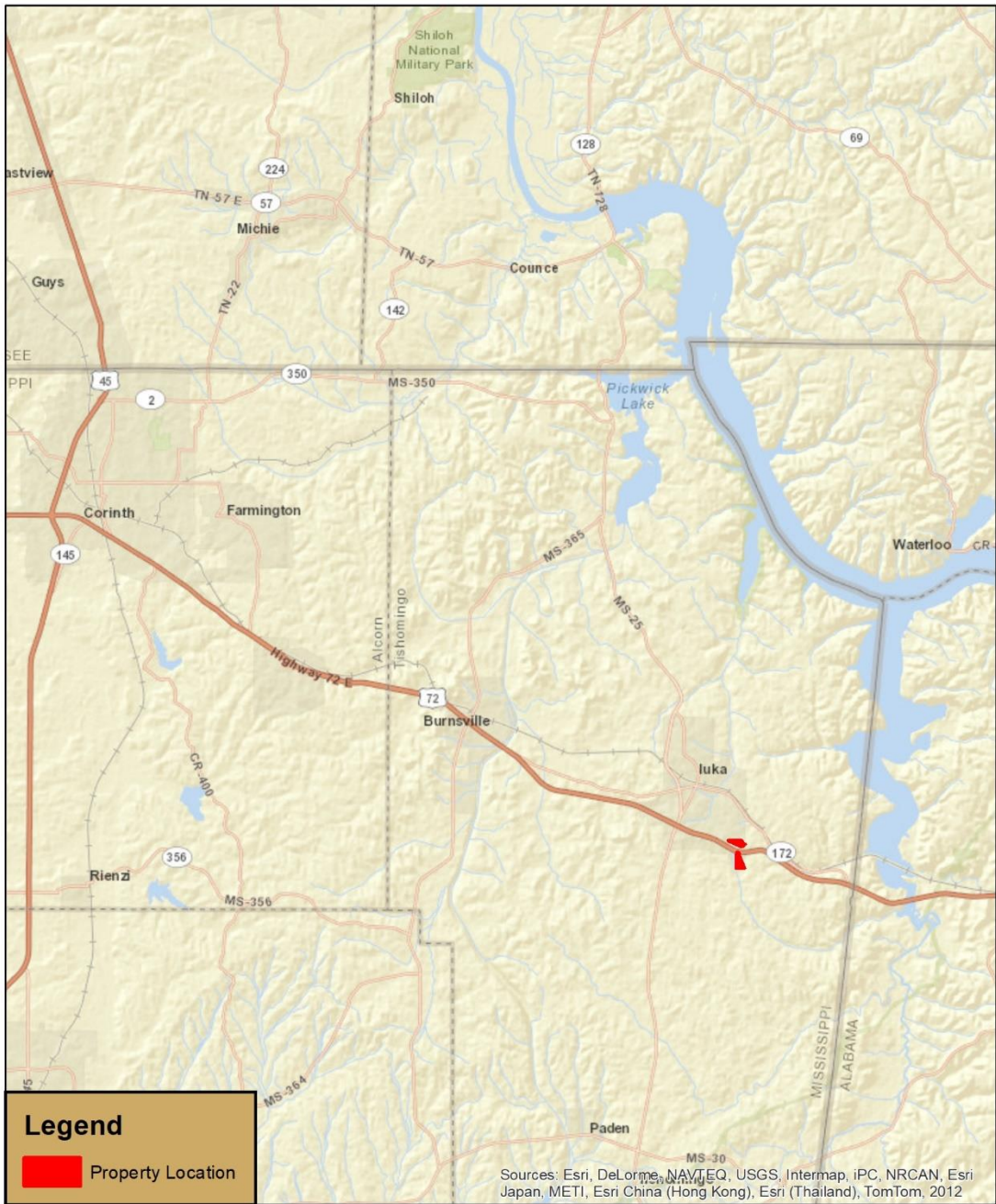


Growing Assets, LLC

**TRACT NUMBER  
 EJW01,02**

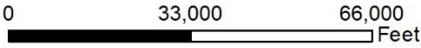






Growing Assets, LLC

**TRACT NUMBER  
 EJW01,02**



112 S. Main Street Suite 201 • Tuscumbia, Alabama 35674  
 (256) 826-5990 Phone  
[www.GrowingAssetsLLC.com](http://www.GrowingAssetsLLC.com)